



20 16 ANNUAL REPORT

Chase Skrubis
First Tee of Connecticut representative
Participating in the 2016 Nature Valley
First Tee Open at Pebble Beach

MORE THAN A GAME

Isabella Thomas participates The First Tee of Connecticut learning center at Alling Memorial Golf Club in New Haven, CT.



WHAT DRIVES US?

President's Message:

Dear Friends of The First Tee of Connecticut,

After a successful conclusion to 2016 (in our 17th year of existence), we look forward to celebrating 2017 and the 20th anniversary of The First Tee worldwide. It also gives us the opportunity to reflect back on all that has been accomplished thanks to our Board, donors, staff, coaches, volunteers and families. The positive impact of The First Tee programming is proven by the many Connecticut youths who have participated, grown-up, graduated, and returned to our chapter to coach, volunteer, mentor, donate, succeed in their careers and be positive role models for our current generation. We have read about the many accomplishments of so many of these fine young people in the pages of our newsletters in the past.

In the course of our 17 year history, we've learned that there's so much more to our curriculum than just golf, the life skills, the 9 healthy habits and core values which include honesty, integrity, courtesy, respect, judgment, perseverance, responsibility, confidence and sportsmanship.

We've also observed over the years that the journey which is learning the game of golf along with its life lessons enhances other human qualities that are invaluable as we grow to become successful citizens and good people. Attributes like patience, humility, focus, compassion, comradery, empathy, competitiveness and the abilities to enjoy and celebrate are greatly enhanced in young people through their involvement in the game. How disciplined must one be in order to get better every day? How much joy is there when you celebrate your perfect shot? How humbling is golf when you don't play as well as you expect to? How badly do you feel when your partner is not playing well? And, how strong can the friendships become when they are nurtured on a golf course? These life lessons are as important as our core values and healthy habits. They also demonstrate once again that golf is more than just a game and has unlimited potential to educate us and prepare us for the challenges and demands of life.

As I phase down my 7+ years as Executive Director of this amazing organization, I thank the wonderful and dedicated people I've come to know and thank the game which mirrors the challenges and rewards



of life and provides our young people with the right tools to grow and thrive in the future.

It has truly been a pleasure.

Yours as always,

President & Executive Director

Board Of Directors:

Michael J. Auseré
Donald J. Barr, Emeritus Director
Kenneth Baldwin
Theodore Bobroske
Paul Bocciarelli, D.M.D.
Tim Bunt
Jeff Calhoun
Coach Jim Calhoun (Hon. Dir.)
Elizabeth (Liz) Caron (Hon. Dir.)
Jeffrey L. Cohen, M.D.
Javier Colon (Hon. Dir.)
David Dixon, Chairman
Barbara Karis Downey (SNEWGA)
Brad Faxon (Hon. Dir.)
Bill Flood (CTPGA)
William Gray
J.J. Henry (Hon. Dir.)
Robert J. Hess
Peter T. Joyce
Joe LaCava (Hon. Dir.)

David M. Ladd
Mercedese Large
David P. Marks C.F.A.
Donny Marshall (Hon. Dir.)
Edwin H. May III, Emeritus Director
Manu Mazumdar
Patricia H. Meiser
Paul E. Mersereau, Esq., Emeritus Director
Henry T.A. Moniz
Michael Moraghan (CSGA)
David E. Polk, President
Carl M. Porto, Esq., Secretary
Glen M. Rapoport, D.M.D.
Gary M. Reynolds, Emeritus Director
Marshall S. Ruben
Mim Schreck (CWGA)
Scott Seymour
Thomas E. Vacheron
John J. Walsh, Jr.
Craig Watchmaker
Suzy Whaley (Hon. Dir.)
Lorenzo (Skip) B. Wyatt, Treasurer

Staff:

David E. Polk,
President & Executive Director
Mark Moriarty,
Program Director
Patrick O'Connor,
Assistant Program Director
Christy Miller,
Development Director
Marie Bernatchez,
Manager of Administration



OUR FRONT 9



1 Making headlines on the PGA TOUR:

13-year old Meghna Mazumdar of South Windsor won a spot with playing partner PGA TOUR pro Rory McIlroy in the 2016 Wells Fargo Championship by penning the National prize-winning essay on her “Go-To-Team” support network. Meghna and her parents credited two members of her Go-To-Team —Coach Ted Pisk and Coach Marty Sienko, who started coaching Meghna seven years ago at Goodwin Park in Hartford, for teaching Meghna important First Tee Life Skills that now all use as a family.



Meghna Mazumdar (right) with playing partner Rory McIlroy at 2016 Wells Fargo Championship.



2 New Board Chairman:

In December 2016, The First Tee of Connecticut welcomed the new Chairman of the Board—David Dixon, Senior VP & Regional Manager of People’s United Bank in Hartford. After 16 years, founding First Tee of Connecticut Board Member Ted May retired (see “In The News”). Like his predecessor, Dave is passionate about all things UConn and the game of golf. He is excited to bring the game and the Life Skills Experience to growing numbers of Connecticut youth.



4 Volunteer Profile:

Tim Bunt of Ridgefield, Senior Vice President & Chief Risk Officer of CBRE Global Risk Management, is an active volunteer and Board Member of The First Tee of Connecticut since 2016. Tim’s daughter Caroline is also involved with The First Tee; they enjoying coaching together at Richter Park, Danbury, CT and she’s a member of the Ridgefield High School varsity golf team.



6 Coach Profile:

Coach George Claffey joined The First Tee team in 2005. He teaches at the New Haven, Waterbury and Prospect sites and also instructs thousands of students in the winter In-School Program. George is the teaching professional at Miner Hills Golf Course in Middletown and has been selected as one of the top 100 teachers by The World Golf Teachers Federation. He was a school principal and a college professor who now continues his dedication to education by teaching life skills through golf.



8 Teacher Profile:

Joan Golden has been joyfully teaching physical education in Hartford for 28 years. In 2006, The First Tee National School Program was introduced in Hartford elementary schools. Joan is an active supporter of the program, as it is developmentally appropriate and it incorporates Core Values and Healthy Habits. Because of this opportunity, Joan was asked to become a National Trainer for The First Tee, bringing a standard-based, developmentally appropriate golf program to PE teachers all around the U.S.



3 CEO Watch:

Despite relocating from Connecticut to Boston in 2015, Art and Mariko Byrne have continued their role as our most ardent and loyal benefactors. Mariko and Art, the former CEO of The Wiremold Company, are avid and accomplished golfers and remain extremely generous supporters of The First Tee of Connecticut, which enables us to do so many things to positively impact the youth of our state. Our sincerest thanks to Art and Mariko!



5 Donor Profile:

With a 38 year career on Wall Street starting in the 60’s (and one of the first women on the NYSE floor), Beverly Buckner Baker of West Hartford knows how to raise much needed funding for The First Tee of Connecticut. Beverly is equally generous with her time, not only does she volunteer at several of our events but she also helps by pulling together great silent auction items!



7 The Right Course:

Noel Hall is in his 25th year working with the TPC/PGA Tour network. Starting in the maintenance department for the TPC River Highlands in 1993, Noel now holds the title of Senior Assistant Superintendent. Noel works closely with The First Tee of Connecticut with educational events on what it takes to maintain a golf course and how it benefits a healthy environment. Noel also enjoys volunteering his time with the homeless shelters in Waterbury as well as serving and assisting the food shelters in his hometown of Torrington.



9 Volunteer Profile:

Peter Kryzek is a Volunteer Coach for The First Tee of Connecticut. He is into his 6th year assisting Coach Lindsey Hansen, with Birdie and Eagle level classes in Cromwell. Peter has benefited by positive experiences with golf since his teens, when he learned the game as a caddie. He is fortunate to assist young people to explore the positive values connected with the game. Peter is a VP- Financial Advisor with Morgan Stanley Wealth Management, and lives and works in West Hartford, Connecticut.



Governor Dannel Malloy speaking at 2016 Travelers Championship Opening Ceremony at the David & Geri Epstein Learning Center at The First Tee of Connecticut in Cromwell, CT.

First Tee Learning Center Hosts Emotional Travelers Championship Opening Ceremony.

Although the clouds forced the 2016 Travelers Championship Opening Ceremonies (August 1, 2016) inside to the David & Geri Epstein Learning Ceremony at The First Tee of Connecticut, it certainly did not wash out the joy and emotion.

Before local and national TV cameras, Connecticut Governor Dannel Malloy joined Nathan Grube, tournament director of the Travelers Championship; Travelers Executive Vice President and Chief Administration Officer Andy Bessette and Co-Honorary Chairs Brian Savo, of East Haven and Jay Fishman, Travelers Executive Chairman of the Board (who sadly passed away shortly after the 2016 Tournament). Both Jay Fishman and Brian Savo suffer with ALS and spoke about their experiences with the disease. The Travelers Championship also announced it was partnering with the Hospital for Special Care in New Britain. All of the tournament proceeds benefit one hundred different charities.

Chase is on at Champions TOUR Event

Chase Skrubis of Granby was the fourth consecutive First Tee of Connecticut participant to earn a playing spot in 2016 The Nature Valley First Tee Open at Pebble Beach.

Chase and 80 other young men and women, were selected by a national panel of judges who evaluated participants' playing ability and comprehension of the Life Skills and Core Values learned through their involvement with their local First Tee Chapter. Chase had the added honor of being selected to speak at the tournament's opening reception where he learned he would be playing with Esteban Toledo, PGA TOUR Champion and 2015 defending champion. Esteban and Chase were both interviewed live on the Golf Channel. They also made the cut! Chase did well on the golf course, but more impressively, he did a fantastic job during his first-ever interview on live TV when his confidence really showed.

Chase returned to Granby Memorial High School the following week, his mind filled with great memories. What a great way to kick off senior year!

New Board Chair Steps Up As Three Old Friends Step Down.

In December, (Pictured Right) Founding Chair Edwin ("Ted") H. May, III, Paul Mersereau, Esq., and Gary Reynolds (PGA member and former First Tee of Connecticut coach) were each recognized as Emeritus Directors as The First Tee of Connecticut also announced the new Chairman of the Board—David Dixon, Senior VP & Regional Manager of People's United Bank in Hartford.

Mr. Dixon was joined by six new Board members: Ken Baldwin, Esq., Partner at Robinson & Cole, LLP in Hartford; Tim Bunt, Senior Vice President & Chief Risk Officer of CBRE in Norwalk; Jeffrey L. Cohen, MD, Hartford HealthCare Medical Group's Chief Physician Officer; Bill Flood, PGA, Director of Instruction at Ridgewood Country Club in Danbury; Peter Joyce, General Manager of Wampanoag Country Club in West Hartford; David Marks, CFA, Senior Financial Advisor based in West Hartford and Manu Mazumdar of South Windsor, former President of Arrowpoint Technologies.



Chase Skrubis and PGA TOUR Champion Pro Esteban Toledo

FUNDRAISING

RAISING FUNDS, FRIENDS AND AWARENESS

Thanks to our tournament committees, sponsors and players, fantastic volunteers and golf club professionals who believe in our mission, over \$215,000 was raised this season! As a direct result, The First Tee of Connecticut will be able to continue offering the Life Skills Experience at 22 locations across the state for just \$7-\$9 per lesson, at most locations. These tournaments have been a tremendously important component of our fundraising budget over the years, and the collective proceeds are a key reason why we are able to impact the lives of more than 72,000 children state-wide.

Annual Patrons' Breakfast

A very important event for The First Tee of Connecticut is the Annual Patrons' Breakfast, traditionally held the morning of Saturday's round during the Travelers Championship. The Breakfast provides The First Tee of Connecticut's Staff and Board of Directors the opportunity to say "Thank You" to donors and is the perfect setting to present scholarships to participants who attend tuition-based schools. This year's Breakfast featured award-winning author and sports commentator John Feinstein as guest speaker.



(Left to Right) Donny Marshall, John Feinstein and Ted May, Chairman, The First Tee of Connecticut

The Roberta Massey Memorial Charity Classic for Women at Waterbury Country Club

The Roberta Massey Memorial Charity Classic for Women at Waterbury Country Club paid tribute to The First Tee of Connecticut Board of Directors member, the late Roberta Massey, who was a lifelong advocate for women's golf. Sixty-eight women enjoyed a beautiful day on the course as well as The First Tee of Connecticut former participant and current coach, Sadie Martinez, as she described how her involvement with The First Tee has impacted her life and how she hopes to give that back to others.



Our low Gross Winners from left to right are Hannah Steel, Norma Noyes, Jean Sennett and Carol Galbraith.



8th Hole

The First Tee New Haven County Charity Classic Presented by Yale University Athletics.

Eighty-eight players enjoyed a challenging round under spectacular skies at The Course of Yale in support of The First Tee New Haven County Charity Classic Presented by Yale University Athletics. Over the past 14 years this event has raised in excess of \$711,000 to support programming in the Greater New Haven and Waterbury regions, so we are grateful to all those who have contributed to this event's success.



NBC CT's Brad Drazen, Board Member Javier Colon, and Board Chairman Ted May

The Walmart Charity Classic, a/k/a the "Kick-off to the Travelers Championship"

The Walmart Charity Classic, a/k/a the "Kick-off to the Travelers Championship" was held on July 17th at TPC River Highlands. The day was a scorcher, but between the ample hydration provided by Crystal Rock, delicious food from DISH Restaurant, pristine course conditions and our local celebrities that participated, the day was a big hit! This event has raised close to \$751,000 in support of programming in the central part of the state, thanks especially to continued title and presenting sponsorships from Walmart and Stanley Black & Decker, respectively.



15-year old Birdie level participant Christina Ludwig, Honorary Chairperson

The PwC First Tee Charity Classic

The PwC First Tee Charity Classic, which benefits programming in Fairfield County, was hosted at one of the oldest and most challenging courses in the Northeast - Wee Burn Country Club - on Monday, July 25th. The Fairfield County First Tee Charity Classic has raised close to \$1M since it first began in 2003. Hats off to PwC for their tremendous support as Title Sponsor for the past 5 years, to MasterCard for their continued support over the years as Presenting Sponsor, and to Tim Bunt at CBRE, Inc. for his personal recruitment of sponsoring foursomes.



Javier Colon at Infinity Hall fundraiser

An Evening With Javier Colon

An Evening With Javier Colon hosted in the intimate setting of Infinity Hall- Hartford on December 3rd was a very special night which included a charity concert and VIP meet & greet reception with Javier and resulted in \$10,000 raised for The First Tee of Connecticut. Our supporters learned first-hand why this proud father of First Tee participants is known as one of the best acoustic soul artists around today.

The Final Final Open Keeps Dishing It Out

They may not be Arnold Palmer, Jack Nicklaus and Gary Player, but they certainly are OUR "Big Three" here at The First Tee of Connecticut! None other than current First Tee of Connecticut Board Member Dr. Paul Bocciarelli, DMD, President of Dish Restaurant Group, Danny Keller and Executive Chef of Dish Bar & Grill, Bill Carbone.

These three friends came together in 2006 to organize a golf tournament in memory of their dear friend and business partner Thomas Altmann who passed in December 2005. They wanted to turn a tragedy into a meaningful way to honor their friend Tommy, whose passion in life was the restaurant business, as well as a devotion to charity work. Twelve years later, aptly named "The Final Final Open" has raised over \$275,000 for The First Tee of Connecticut. Their goal was to offer opportunities for improvement in quality of life and create a platform where children can increase their potential for success. Well played - we think they aced it!



Dr. Paul A. Bocciarelli, DMD; Danny Keller, president of Dish Restaurant Group, Chef Bill Carbone

2016 PROGRAM WRAP-UP

It was a fun and active season for The First Tee of Connecticut with over 2,400 young people participating in programs at one of 22 facilities across the state.

2016 PROGRAM PARTNERS

- Boys & Girls Clubs of Hartford
- Boys & Girls Club of New Haven
- Boys & Girls Club of New Britain
- Channel 3 Kids Camp
- Hartford's Camp Courant
- Waterbury Police Activities League
- Hartford Police Activities League
- Manchester Early Learning Centers
- The Legacy Foundation of Hartford
- Horizons at Ethel Walker School
- Farmington Extended Care & Learning
- Riverfront Recapture "A Sporting Chance for Youth Day"
- Indian Valley YMCA
- New Haven Parks & Recreation
- Yale University African American Affinity Group
- Waterbury Public Schools
- New Haven Public Schools
- Hartford Public Schools
- Cromwell Public Schools
- Middletown Public Schools
- East Hartford Public Schools
- Newtown Public Schools
- Regional School District 13
- Irving Lane School
- Discovery Academy (CREC)
- Brass City Charter Schools
- Elm City Elementary School
- Brownstone Intermediate School

Spring Into Golf.

The spring season featured the 3rd Annual Parent-Child event at Lyman Orchard's Apple Nine and the first of several LPGA-USGA Girls Golf programs including "Bring A Friend Day." Once school let out for the summer several events including the Travel Team program, the Nutmeg State Games and the East Mountain Junior Open allowed participants to test their "golf skills" on the course while several participants attended national opportunities where they were able to showcase their "life skills." In 2016 eight sessions of our popular Summer Camp were offered for young people. A few of these weeks were dedicated to "Girls Only" and to our youngest friends within the TARGET Level for ages 5 & 6. Despite popular opinion, the fall season brings almost as many participants as the rest of the year, proving again that the golf season does not end when school resumes!



George Claffey and Friends at a Group Lesson at Alling Memorial, New Haven

Those are just a few examples of The First Tee's "Activity-Based" approach to seamlessly incorporating important Life Skills within golf activities. The Life Skills Experience is at the heart of what The First Tee is all about. Our trained coaches teach young people aged 5-18 Nine Core Values: Honesty, Integrity, Respect, Courtesy, Judgment, Perseverance, Sportsmanship, Confidence and Responsibility, and Nine very important Healthy Habits like staying hydrated and wearing sunscreen. Speaking of wearing sunscreen, our new Summer Camp Director, Meghan Parks, did a super job leading 8 weeks of "sold out" summer camps. What a great way to prepare her for her new job as a Physical Education Teacher in the Bridgeport Public School System!

The Pros Behind The Swings.

The Life Skills Experience would not be as effective (and at the same time fun) as it is without our wonderful coaching staff, made up of First Tee Coaches, Golf Professionals, high school and college students (many of whom are alum of the program) and volunteers.



"Following through" with indoor lessons



Hartford Boys & Girls Clubs of Hartford Northwest & Asylum Summer Camps at Keney Park

ALUMNI

WHERE ARE THEY NOW?

THEN



Buick Championship at the TPC, 2004

NOW



Now married with Samatha

Jeff Laponte

Jeff Laponte, age 26, was active in The First Tee of Connecticut programming between 2003-2009. Today, Jeffrey is Market Manager/Mechanical Engineering for Parker Hannifin Corporation, Fortune 250 global leader in motion and control technologies. Jeffrey says “life skills” he learned at The First Tee were life long assets. “The program truly helped me become the person I am today by emphasizing the importance of career and life building skills beyond the sport of golf. Some of the memorable experiences I had in the program were learning the proper hand shake, hitting a “fried egg” out of the bunker, but most importantly the importance of being honest on and off the golf course.”

THEN



Travelers Championship

NOW



Going for teaching degree

Taylor Januario

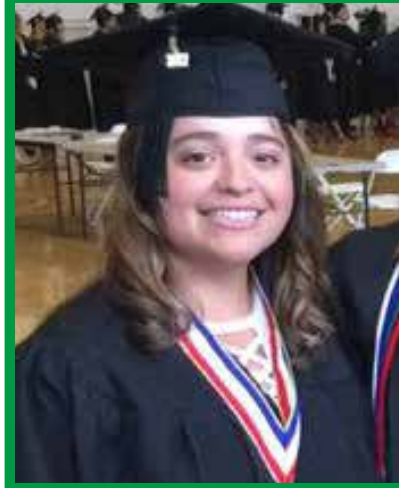
Taylor Januario wanted to pursue a career in graphic design but quickly changed her mind when she realized her passion for teaching youth. Taylor is attending Manchester Community College with the goal to become a history teacher. Now, 24 years-old Taylor has been involved with The First Tee of Connecticut since 2001 and has been very active as a coach since 2009. Taylor has completed Level I and II First Tee Coaches Training. This September, Taylor will be attending Level III in New Jersey.

THEN



Sadie as Hartford Team member in 2007.

NOW



Graduating college

Sadie Martinez

In 2004, Sadie Martinez started with The First Tee unofficially tagging along with her older brother Dan at Goodwin Park in Hartford. This past May Sadie graduated the University of Cumberlands in Kentucky with a Double Major degree in Criminal Justice and Spanish. This summer, Sadie is moving to Houston to Royal Oaks Country Club to coach her passion, junior golfers.

But before the next round in her life, Sadie has one more set of rounds to finish — her college team won the Conference Championship punching Sadie’s ticket to the NCAA Nationals. “My first Nationals!”

THEN



The First Tee Member, 2007

NOW



A day at the office at Johns Hopkins Hospital

Allen Hansisuk

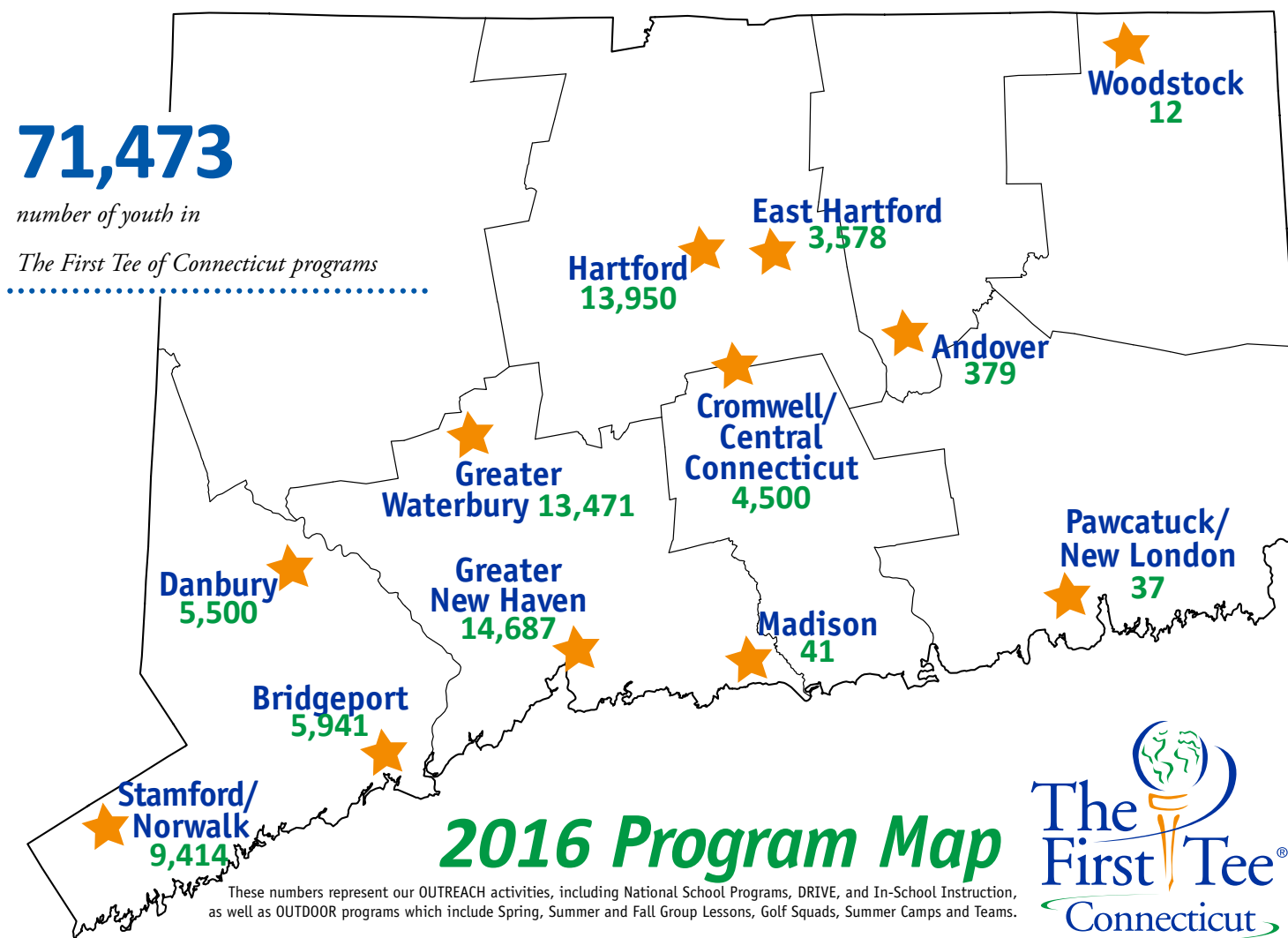
Allen Hansisuk graduated from the University of Connecticut (go Huskies!) with a Bachelor’s of Science in Physiology and Neurobiology. Allen was active with The First Tee of Connecticut from 2004 to 2013 (including coaching summer camp).

Today, Allen, 24 years old, works at Johns Hopkins Hospital in Baltimore supporting and developing the software that runs the hospital. John is no longer active with The First Tee but as John sees it, “The First Tee is not just about teeing up golf; it teaches you how to tee up life.”

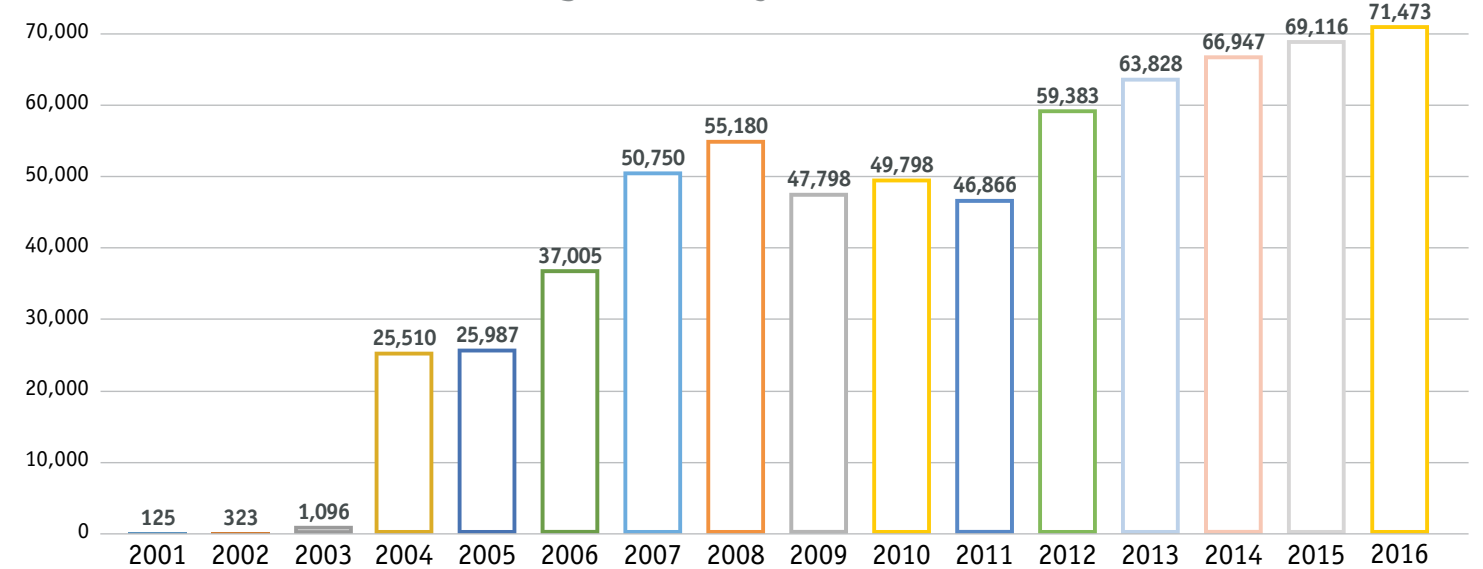
WHEN NUMBERS TELL THE STORY

71,473

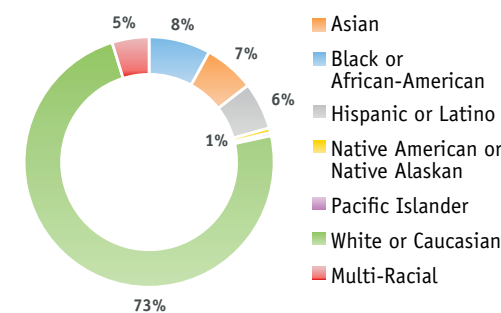
number of youth in
The First Tee of Connecticut programs



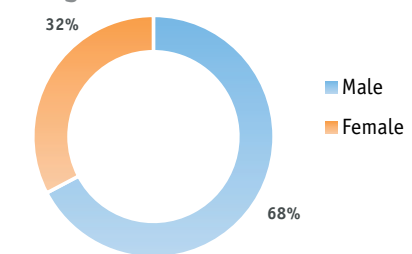
The First Tee of Connecticut Program History Total participants served



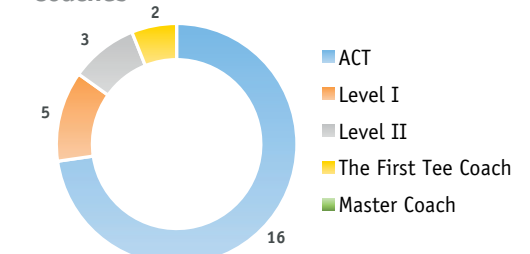
Registered Ethnicity (Non-Caucasian Goal: 33%)



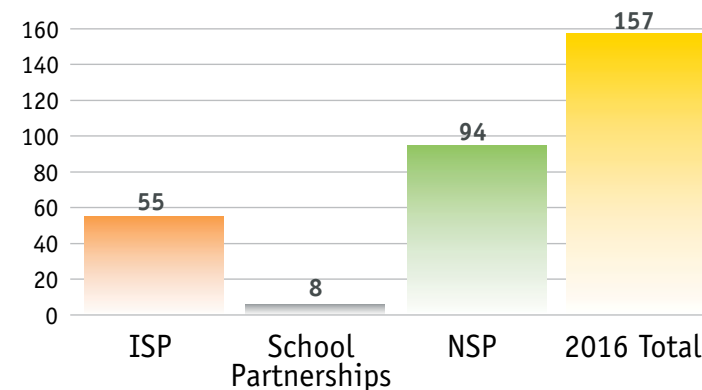
Registered Gender (Female Goal: 35%)



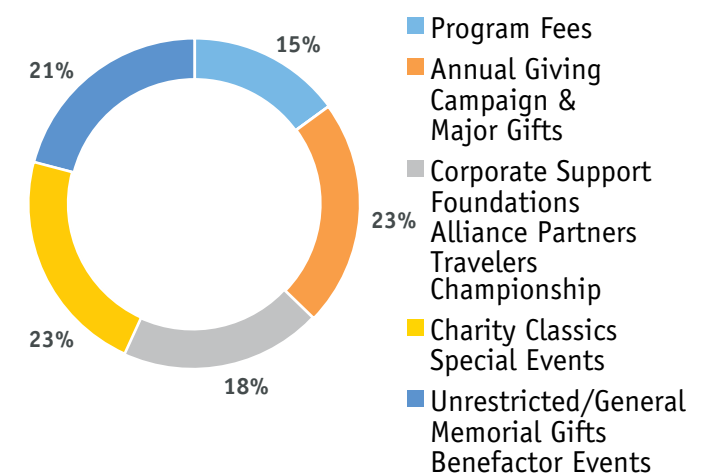
Coaches



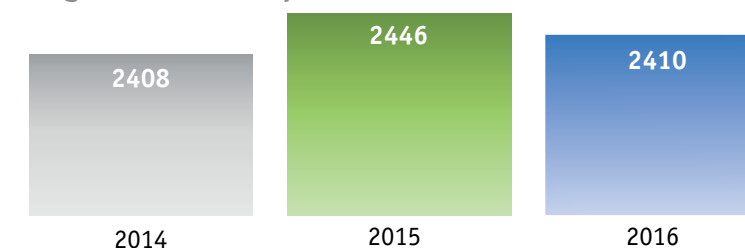
School Programs



2016 Revenue Sources



Registered Participants



THE POWER OF SUPPORT

The First Tee of Connecticut is grateful to the many individuals, foundations, corporations, golf course staff, and alliance partners for providing chapter support during 2016. We also appreciate the many in-kind donations we received throughout the year. Thanks to this incredible support and promotion, we were able to introduce the Life Skills Experience to over 71,000 young people in Connecticut!

Named Learning Center Benefactors

David & Geri Epstein
Karl Krapek

Core Value Banners

Bessette Family
DISH Restaurant Group
Carolyn Greenspan & Marshall Ruben
In Honor of Christopher Harrison
Interfaith Open
Longobardi Family
Bob & Alys Morande
Robinson & Cole
Walking for Kids Foundation

Sportsmanship Level \$20,000 - 99,000

Art & Mariko Bryne
Connecticut State Golf Association
DISH/The Final Final Open
Mrs. Geri Epstein
Mastercard
Mastercard Employee Outing
PricewaterhouseCoopers LLP
Stanley Black & Decker
Travelers Championship
Wal-Mart Stores, Inc.

Responsibility Level \$10,000 - 19,999

American Savings Foundation
Andrew K. Dwyer Foundation
Robert & Marjorie Cenci
Ron & Opal Gilmore
Max Cares Foundation, Inc.
Daniel Novarr Memorial Golf Tournament

PGA TOUR
Marshall S. Ruben & Carolyn Greenspan
USSGA Memorial Fund, Inc.
Henry & Holly Moniz
World Golf Foundation, Inc.

Respect Level \$5,000 - \$9,999

Accenture LLP
AIG
Aon Risk Solutions
Ed Budd
Community Foundation of Middlesex County, Inc.
CHUBB
Crew Family Foundation, Inc.
Connecticut Section PGA
Ron Denny
David & Christine Dixon
Skip Gengras
Bill & Diana Gray
Great American Donut, Inc.
Rob & Karen Hess
Hoffman Motor Group
Ned & Barbara May
Ted & Debbie May
May, Bonee & Walsh
National Football League Alumni, Inc.
People's United Bank
David Marks & Ann Sagalyn
Charles & Lida Tingley
Tokio Marine HCC
United Bank Foundation
Connecticut
UTC Building & Industrial Systems
Tom & Lisa Vacheron
Webster Bank, N.A./Stamford
XL Specialty Insurance
Company
Zurich

Perseverance Level \$2,500 - \$4,999

Shepard & Beverly Baker
Bartlett Brainard Eacott
John Beirne
Paul Bocciarelli
Peter & Siri Burki
Ed & Michelle Caffrey
Susan Carlan
Jeff Cohen
Connecticut Lighting Center
Country Club of Waterbury
Linda Cremin
Eversource Energy Service Co.
Paul Ferrell & Paula Cleary
Gary Gatzen Memorial Golf Tournament
Hartford Hospital
Jeff & Mary Helen Holzschuh
Interfaith Golf Open
Ladd Capital Management LLC
Marsh & McLennan
Harry Nowobilski Memorial
Mark & Luanne Paley
Plan B Burger Bar (Locals 8, LLC)
Private Capital Group
Robert & Lisa Pyne
Robinson + Cole, LLP
Dave Schupp
Simsbury Granby Rotary Club, Inc.
Specialty Lighting Group LLC
The LPGA Foundation
The Tolland Fund
The Whittmore Foundation
John & Marcie Walsh
Bill & Marianne Watson
Webster Private Bank
Ken & Liz Whitney

Judgment Level \$1,000 - \$2,499

Aetna Foundation
Avon Wellness Center Dental Associates
Sam & Janet Bailey
Ken & Kathleen Baldwin
Bank of America Matching Gifts
Chris & Kathy Berman
Teddy & Regina Bobroske
Boyd Watterson Asset Mgmt
Melissa & Geoffrey Bradshaw-Mack
Glenn & Shannon Buggy
Chris & Kim Byrd
Charter Oak Building
Maintenance, Inc.
Mr. & Mrs. Eric Christiansen

George & Kristine Claffey
Connecticut Sports Management Group, Inc. (Nutmeg State Games)
Connecticut Women's Golf Association
Jeffrey Digel
V.J. Dowling
Downey Family Foundation
Dan Earle
Fiduciary Investment Advisors
Fleming's Transportation, Inc.
FreshPoint Connecticut
John & Rebecca Gernon
GreatBlue Research, Inc.
Wes & Terry Guylay
Robert & Hazel Hall
Mike & Janet Halvorson
Hartley & Parker Limited, Inc.
Harvard Pilgrim Health Care Foundation
Horizon Financial Advisors, LLC
HRG Management, LLC
Insite Design Group
Mark Jacobs
John & Kelly Hartman
Foundation
Kohn-Joseloff Foundation
Roland & Marilyn Labonte
David & Billie Ladd
Ladd Capital Management LLC
Mary Laughlin
LHI Metals
John & Tamara Lundgren
Patricia Menendezcambo
Mercer Health & Benefits LLC
Paul Mersereau
MGA
Morgan Stanley Foundation
Marge Morrissey
Sara & Don Nelson
Neuberger Berman
Parrett, Porto, Parese & Colwell PC
Rob & Hillary Pease
People's United Bank
Commercial Banking
David & Rennie Polk
Premier Limousine/ SD
Transportation Services
Mary & John Rapaport
Glen Rapoport
Mike & Elizabeth Reilly
Gary & Mim Reynolds
Salute LLC
Seabury
Ed & Irene Shaw
Pat & Margaret Shouvin
Glenn & Barbara Sieber
Smith Insurance

SNEWGA Board of Directors
Stroup Family Fund
The Bauman Family Foundation, Inc.
The Harold L. Wyman Foundation
The Hartford Electric Supply Company, Inc.
The NEFCO Corp
The Russell & Katherine Fisher Family Fund
UBS Financial Services
Walking For Kids Foundation

Integrity Level \$500 - \$999

Kathy Anderson
Gary & Patricia Arnold
Chris & Leslie Aronson
Gene & Linda Autore
B & L Construction, Inc.
Peter Baldwin
Bankwell Financial Group, Inc.
John Barker
Don & Jane Barr
Frank & Sharon Barrett
Tom Belden
Richard Berry, III
Donald Bidwell
Bludeau & Veilleux LLC
Boccaccio Family Trust
Arnold Boecklin
Phil & Valerie Bonee
Bozzuto's Inc.
Bradley Airport Valet Parking, Inc.
Bradley, Foster & Sargent, Inc.
Tim Bunt
Gene & Marilyn Burton
Daniel & Lisa Callahan
John Callies
CDA Roofing & Siding Contractors, LLC
Buzz & Nicki Chatfield
Curt Clemens
Bill & Jeanne Conrad
Lang & Lynn Cook
Harry Corning
CT Association of Golf Course Superintendents
CWPM
Kenneth Deangelis
Russell & Lora Jo Dickhart
Duane Drouin
John Dunagan
Peter & Jacqueline Dunn
Fork Hospitality, LLC
Frank Foster
Geraldine Frankel

FSM Plasticoid Manufacturing, Inc.
Mike & Ellen Funch
Michael & Janie Galbreath
Bob Garthwait, Sr.
Glastonbury Hills Country Club
Robert & Wendy Goodenow
Douglas & Darlene Gubner
Leslie Harrison
Bill & Karen Harrison
Hartford Distributors, Inc.
Heidenreich Family Foundation
David & Allison Hill
Theron & Andrea Hoffman
Thirza Hyatt
Joey Garlic's Newtoning, LLC
Barbara Karis-Downey
Dennis & Gail Kelleher
Dan & Jeanne Kleinman
Ellie Large
Walter Leckowicz, DMD
Paul & Janet Lewis
Frank & Pat Longobardi
Austin & Linda Lydon
Manafort Brothers, Inc.
John McCambridge
Lawrence McHugh
Patricia Meiser
Wendy Montanaro
Stephen Kidder & Judith Malone
Jay Mullarkey
Rajiv Shenoy & Natasha Singh
Kevin O'Brien
Deborah Owens
Samuel & Gaier Palmisano
Frances Paquin
Marc & Kay Particelli
Ron & Carole Percival
Phil & Jennifer Platek
Barry & Sherry Ramsay
Mark Raymond
Mike Reilly
Brian & Tracy Rice
River Highlands Homeowners Association
Diane Rothwell
Stephanie Russell
William & Erin Russell
Jane Sanford
John Seifert
Jean Sennett
William & Ellen Shalley
Roger & Marcia Smith
Brian Smith
Joe Sobowicz
Donna St. John
Richard & Joanne Stevens
Jim Stewart
Michael & Julie Summa
Beverly Thomas
Tom Trumble
Matt & Betsy Udal
US Foods
V. Carbone Hospitality LLC
Joan Waldron
Jean Walker
David & Connie Weaver
Ronald Weil
Mike & Margaret Wheeler
Michael Wilder
Mark & Patricia Willis
Jeff & Jane Witherwax

Honesty Level \$250 - \$499

Aaron Posnik & Co., Inc.
Michael & Jacqueline Albis
David & Susan Alpeter
Aqua Turf Club
Ben & Shawn Armsan-Bray
Edward & Elisabeth Babington
Baribault Jewelers, Inc.
Bob & Donna Batch
Tom Benoit
John Berman
Arthur & Sandra Blumer
Tim & Barbara Boroughs
Brescome Barton, Inc.
John & Trisha
Jeff Burns
Leverett Byrd
Fred Caffarelli
Patrick Callaghan
Jason & Liz Caron
Elizabeth Cassanovas
Stephen & Susan Chernock
Sandy & Diane Cloud
Bobbi & Barry Collier
Jonathan Colman
Susan Connelly
Christopher & Carina Crain
Mary Crary
CRBE, Inc.
Lois Dailey
Edward Dandridge
Dan & Judith DiFiore
Dominion Nuclear Connecticut, Inc.
Patrick Dore
Kevin & MaryRose Driscoll
Joe & Lindsay Duggan
John & Dawn Egan
Doug & Sheila Elliot
Engineered Building Products, Inc.
Falvey Linen Supply
Eileen Flora
Joe & Jeanette Floto
Richard & Beverly Fonner
Peter Foote
Richard Franco
Michael Gabor
Alex Garnett
Roger & Margie Gelfenbien
Joseph Giaquinto
Godfrey Gill
Ann Goodbody
Grant Brothers East, LLC
Brett & Deborah Greenberg
Oz Griebel
Bob & Susan Haggett
Matt Halprin
Timothy Hickey
Jeff & Donna Hires
Ronald & Katherine Hodge
Katherine Holden & Josh Jaffe
Amory Houghton III
Brian & Elizabeth Hourihan
William Hughes
Fred Hyser
John Michael Associates, Inc.
Shane & Mia Kinahan
Robert & Susan Kinder
Klubs for Kids Fund
Thomas Kreitler
John & Heather Kreitler
Ric Lacivita
Jim, Tricia & Cameron Ledford

Jean Lepore
Dave Lindsay
John & Julie Livingstone
Bill & Sharon Macey
Marcum LLP
Donny Marshall
Ann Marie Massie
Bill & Kate McCabe
McPhee Electric
John & Pam Meehan
James & Vinnett Michel
Michael & Lizette Monheim
Gary & Mary Montanus
Ken Mountcastle
Kristen & Adam Mucinskas
Tom & Mary Mullaney
Michael & Susan Neilson
Brad Newman
Avra Novarr
Matthew Novarr
Tom & Kathleen O'Connell
Ray & Lisa O'Donnell
David Offensend
John & Christine Oleynick
Men's Golf Association of Orange Hills Country Club
Bob & Cherie Orenstein
Robert Peabody
Eileen Peterson
Bill & Christine Petit
Gus Pouloupoulos
Power Unlimited
Kelly & Chris Powers
Dario Quiros
Rainbow Graphics
Jerry Renzoni
Restaurant Supply, LLC
Rhoda & David Chase Family Foundation, Inc.
Charles & Jennifer Richardson
Stephen Roach
Robert Hensley & Associates, LLC
Rob Rosenberg
Bridget Roy
Joe & Sal Russo
Craig & Kelly Saltzgaber
Katharine Sanford
Mim Schreck
Bruce & Mary Sellers
Scott Seymour
Shepard Steel Co., Inc.
Ed Silver
Phil Small
Peter & Carol Smith
Clair Smith
David & Kathleen Smith
Michael Smith
John Steinbreder
Doug & Carolyn Stevens
Sam & Donna Stout
Sharon Tauber
Spencer Taylor
Barbara Taylor
The Cheryl Chase & Stuart Bear Family Foundation, Inc.
Bob & Claudia Thesing
Jeff & Kathy Thomsen
Meghan Thornton
George & Sarah Tierney
Jim & Sue Tillona
Mark & Sheila Tincher
Torello Tire & Auto Repair
Robert Treend
Turbine Controls, Inc.
Mike & Nancy Vespoli

Phil Vogel
Bob & Beth Von Dohlen
Ken & Jackie Walsh
Martin & Anna Waters
Michael Watts
Marc & Maggie Wein
Sherwood & Maggie Willard
Bruce & Roberta Wilson
Seth Wohlberg
John & Kathy Zagaja
Bob & Jean Zech

Courtesy Level \$100 - \$249

Carles & Linda Andrew
A.H. Harris & Sons, Inc.
Bob & Lorraine Albanesi
Jim & Karen Alexander
Patricia Allen
Jack Anderson
Sandy Andrade
Thomas & Eileen Auty
Mary Ellen Baker
Devra Bane
Edward Banks
Paula Baram
Gary Barcher
Robert & Michelle Bartha
Beaudry Construction, LLC.
Jack & Maude Belli
Berlin High School Athletic
Booster Assoc., Inc.
Bob & Suzette Bernatchez
Marie Bernatchez
John & Shelley Biancamano
Rob Bluestone
Deborah Boldry
Jordan Boss
Jim & Beverly Boyle
Don Brant
Ed & Joanne Brazalovich
Breaking Ground Construction, LLC
Dennis Brennan
Joe & Nancy Brennan
John Brett
Mark Brett
Rolie & Roxanne Broadbent
Peter Brown
Jeffrey Brozek
Michael & Irene Brugg
Keith Buehler
C.H. Nickerson & Co., Inc.
George & Jackie Cahill
Mark & Linda Camel
Benjamin & Julie Campbell
Kevin & Sue Canavan
John & Sharyn Cannon
Capitol Consulting LLC
Madeline Capodanno
Jeff Capuano
Richard & Leslie Carney
Laura Casellas

Eric Casey
Richard Cassin
Mark & Lauren Cattel
Mary Caudill
Wesley & Marcia Chalker
Alex Chapman
Arnold & Sandy Chase
Tom Chiapetta
Jerry & Libbian Cohen
CohnReznick
George Collins
Peter & Pat Concelmo
Skip Conn
Connecticut Public Broadcasting Network
Catherine Connor
A.H. Harris & Sons, Inc.
Fritz & Alicia Conway
Agnes Cornwall
Earle & Mary Cote
Donna Courchaine
Timothy & Diane Covello
John Crouse
Dale Crowe
Sheila Crowe
Jay & Carole Cunningham
John Cusano
Bradford Cushman
Ed & Pat Dahill
Gregory Damato
Eric & Pat Daniels
Tyler & Paige Davis
Anne De Oejo
Paul DeBartolomeo
John DeBartolomeo
Janice Desi
James & Mary Devine
Don & Pat DeVivo
Derek Dillon
Maria DiMasso
Kathryn Dimlow
Divot Designs LLC
Tim Donahue
Jim & Maureen Dougherty
Colin Dowling
Benjamin Skaught & Barbara Steele
Mary-Jo & Herrick Drake
Matt & Susan Ely
EMCOR Services
Tom Euvard
Family Optometric Care, P.C.
Kendra Farn-Finz
Gar & Rose Marie Fellman
Steven Feltman
Michael & Julie Fischman
Sandy Fiset
Ray Foote
Charles Foster
Joe Fowler
Jerry & Dawn Frame
Kim Franklin
Marge Funk
Kevin & Cyncie Gage
David & Carol Galbraith



Goodwin Park, Hartford, CT

Thea Gambardella
 Robert Garneau
 Daniel & Lorene Garofalo
 William Gay
 Geo. Goodman Agency, Inc.
 Kyle Gibbons
 David Giedzinski
 Patrick & Lynn Gilland
 John Gillis
 Frank & Marjorie Gillis
 Tony Giorgio
 Fran Girard
 Gwen Glaviano
 Bob & Frankie Goldfarb
 Bob & Lee Goode
 Grassy Hill Men's Association
 Helen Gray
 Marc & Sheryl Green
 Kevin Greene
 Jim & Paula Greenfield
 Eric Greenhill
 Joel & Beth Grieco
 John Guandalini
 Carlo Guerrera
 Dale Guthrie
 Larry Haertel
 Austin Hall
 Hallisey & D'Agostino, LLP
 Roger & Ann Hanlon
 Harper & Whitfield
 Mitch & Lee-Ann Harris
 Gordon & Marjorie Harris
 Jay & Sara Hart
 Hartford Golf Club Women's Golf Assn.
 Charlie Hartigan
 William S. Harwood
 Robert & Sandra Hawkes
 Susan Hayes
 Jim & Pam Healey
 Louise Healey
 Richard & Linda Hedden
 Al & Kathy Herzog
 Myra Hess
 Joe Hoffman
 Holcim (US) Inc.
 Jean Holden
 Bill & Ann Holm
 Bob & Joan Hopkins
 Theodore Horan
 Sandra Howard
 Cynthia Howard
 Rick Hunt
 Sonja Ikenson
 Bob & Susan Izard
 James J. Dowd & Sons Insurance Agency, Inc.
 Ian John



Brian & Denise Johnston
 Peter Joyce
 Judges Classic Golf Tournament
 Marc & Paula Katzman
 Laura Kearney
 James Keever
 John & Susan Kelleher
 Mary Anne Kelly
 Jack & Sally Kennedy
 Patrick & Ann Kenny
 Treacy Kirkpatrick
 Caren Kittredge
 Ron Kleinman
 Michael Klett
 Cathleen Kowalski
 Greg & Kathy Kraczowsky
 John & Lynn Krawski
 L. Suzio Family Foundation
 Ladies at Oak Hill Golf Course
 Debra Lafford
 Robert LaPlant
 Pam Latka
 Lorraine Lee
 Lynn Lefler
 Tom Leloup
 H. Craig LeRoy
 Ray & Kathy Lilley
 Fritz Link
 Peter Lisi
 Tong & Rita Liu
 Bob & Deb Loomis
 Peggy Lorence
 Mark & Cynthia Lovejoy
 Walter & Phyllis Lowell
 Irene Luria
 Chris & Sue Ellen Lyons
 Gerald Mackinnon
 Madsen Group, LLC
 Phillip & Joyce Mahoney
 Mahoney Sabol & Company, LLP
 John & Jackie Mandyck
 Lynn Markley
 Fran Marrello
 Brian & Nancy Martin
 Juan Martin & Elizabeth Sauter
 Jackson Marvel
 Gary & Erika Matt
 Tom & Anne McKeon
 Bud McMullin
 McVane, Bellobuono, Kuzman, LLP Attorneys at Law
 Cynthia Meehan
 Betsy Messert
 K.K. Meyer & Steven Seligman
 Christy Miller
 Natalie Miller
 Jerry and Gail Moore
 Robert & Barbara Moriarty
 Hank Morris
 Cathy Morway-Bloomberg
 Paul Mozzicato
 Alvin Taylor & Mark Taylor
 Tony Falcetti & Tracy Flater
 Carl Bailey & Lauren Dalton
 Thomas Huong & Huong Do
 Cyndi Muldoon
 Mark Murnane
 Patrick & Karen Murphy
 Peter & Linda Murphy
 Arthur Nassau
 National Ready Mixed Concrete Association
 Sandra Needelman
 Steven Nelson

New Britain Sports Hall of Fame Inc.
 Adam Ney
 John & Norma Noyes
 Aaron Oberman
 Jerry & Anne O'Brien
 Paul Ockert
 John & Barbara O'Connor
 Greg Oliver
 Orrick, Herrington & Sutcliffe, LLP
 Will Ouimet
 Ron Kleinman
 Michael Klett
 Tim & Jane Pagnam
 Irene Parker
 Bob & Joan Penney
 Frank Perry
 Al & Katherine Petitpas
 Bryan Petrosky
 PhRMA
 Wayne Pierson
 Ted Pisk
 Kevin Platt
 Prashant Mantripragada & Jaotika Tucker
 Andrew Prokop
 Dennis, Gayl & Michael Purinton
 Jay & Susan Putterman
 Tony Randolo
 John & Susan Rathgeber
 Karen Reidy
 Nicki Rhodes
 Mike & Carol Rice
 Deryk Richenburg
 Tom Ritter
 Dick Roberts
 Russ & Pru Robertson
 Mark Rodbourn
 Joseph & Jodie Roden
 Emily Rosenthal
 Dave Rosenthal
 John Rossi
 Peter Roth
 Susan Rubin
 Thorsten & Sandra Ruelle
 Richard Ruglio
 Betsy Russell
 Michael Sabatino
 Saint Francis Foundation
 Frank & Janet Santa-Donato
 Tony Santore
 Gladys Santos
 Mary Sargent
 Robert & Katherine Saunders
 Al & Marie Scharf
 Kenneth & Edith Schechter
 Robin Schemansky
 Michael & Susan Schenker
 Floydene Sehl
 Joan Shafer
 Elizabeth Sheehy
 Marie Shimchick
 Marty Sienko
 Bob & Sharon Smith
 Cameron Smith
 Larry Smith
 Sally Speer
 Bill & Karin Stahl
 Bill & Phyllis Starkie
 Hannah Steel
 Martin & Linda Stein
 David Steinfeld
 Mark & Barbara Steinfeld

Lewis Stengel
 Charles & Roseann Stepnowski
 Margaret Stevens
 John Stimpson
 Sheldon Stricker
 Cara Subasic
 John & Kathy Suisman
 Andrew & Karen Sullivan
 Greg Oliver
 Erik Sundquist
 Super Cellar Liquors
 Richard Suski
 Tom & Anne Sweeney
 Warren Sweet
 Rosemarie Swiatkiewicz
 Kent Talbot
 Joseph & Kathleen Tapper
 Arthur & Lynne Tarantino
 The Bushnell Center for the Performing Arts
 The Nine Holers at Clinton Country Club
 The Shulansky Foundation, Inc.
 The Zenith Group
 John & Kenia Thomas
 Thomas Hooker Brewing Company
 Kevin Tierney
 Rusty & Midge Tilney
 Jay & Susan Putterman
 Sam & Heather Tomasetti
 Jeffrey Trinklein
 Jackie Vacheron
 Henry & Irma Van Dam
 Victor Advertising Service
 Donna Viestart
 Jeffrey Wade
 Tim Walsh
 James & Joy Wasz
 Craig Watchmaker
 Mark & Karen Weinstein
 Martin & Lori Weinstein
 Wesleyan University Athletics Dept.
 White & Katzman Management, Inc.
 Bill Whittle
 Robert Wiener
 Mike Williams
 Holly Wilson
 Ed & Kathy Winslow
 Jeff & Jen Wise
 Robert Wood
 Woodland Auto Body
 Michael Yankowski
 Neil Yeston
 Peter Young
 Eric & Jessica Zachs/The Eric & Jessica Zachs Family Foundation
 Alfred Zemaitis
 Darlene Zinnen

**Confidence Level
 \$1- \$99**
 Steven Abrams
 Salvatore Agati
 Michael Amodeo
 Arborio Corp
 John & Debbie Arnott
 Gary & Monica Aurora
 Madeline Bacon
 Arthur & Victoria Baker
 Martin Baltus
 Susan Banks

Jack Barnett
 Richard & Carol Barry
 Louis & Judith Bartoletti
 Jeanne Basile
 Rick Beatty
 Francis Beaudet
 Raymond Bell
 Dave & Denise Benoit
 Sally Berg
 Carl & Jill Bergquist
 Bruce & Nancy Berlet
 Nancy Bernstein
 Paula Bevilacqua
 Amy Blair
 Harriet Blanchard
 Samuel Blumenthal
 Don & Jackie Boisvert
 Peter Borkoski
 Cindy Botticello
 Barton & Donna Bovee
 Jay & Sarah Bower
 Larry Bowman
 William Brahm
 David & Carol Brunick
 Sandra Buergi & Carol Flaton
 Jo Buttress
 Beth Bye
 Rhonda Byrnes
 Eleanor Calabretta
 Earl & Lucille Capozzi
 Carol Carlson
 Gerald & Julia Carr
 William & Kathleen Casey
 Richard Cave
 Mark & Deana Chamberlin
 Rusty Chandler
 Blair Childs
 Lee Ellen Chontos
 Jane Churchill-Valvo
 Mary Ann Cipriano
 Charles Claffey
 Chris Clow
 Nathan Cody
 Dominic & Maria Colangelo
 Robert & Betty Jane Cole
 Bradford Collins
 Barbara Collins
 Connecticut Medical Insurance Company
 Mary Connolly
 Douglas & Diane Cook
 Scott & Katie Cormier
 Joan Coughlin
 Bruce & Kathryn Cowen
 Stepeh & Laura Cressotti
 Paul & Dawn Croce
 Patricia Crowley
 Bill Cruger
 Todd Cugno
 Michael & Kira Cunningham
 Don Currey
 Fred & Vicki Daniels
 Susann Danion
 Jordy & Patty DeAngelis
 JoAnne DelConte
 Basil & Anna Deligeorges
 John Dell'Anno
 Ron Dellostritto
 Damon & Alisa DelMonte
 Angelo & Vivian Demio
 Diane DePasquale
 Tony & Diane DiCicco
 Judy Donald
 Margaret Douglas-Hamilton
 Kathleen Doyle



Don & Barbara Drouin
 Stacey Durand
 East Hartford Woman's Club, Inc.
 William & Joan Eddy
 Michael Edelwich
 Rich Ellis
 Ann Falcone
 Alfred & Genevieve Febrrioriello
 Victor & Margaret Ferrante
 AJ & Myra Fezza
 Mary Fisher
 Tim & Joyce Fitzgerald
 Diane Flanagan
 Edward & Doreen Flanigan
 James & Nancy Fletcher
 Laura Flynn Baldini
 John Fonfoma
 Gerry Freedman & Kristen King
 Ryan Friedman
 Jay & Carole Fromer
 Ralph Gagliardi
 Mary Beth Ganucheau
 Keith Garceau
 Sandra Garfinkel
 James & Gail Gates
 Suzanne Gendron
 Robert & Lucille Germain
 Pat & Debra Glynn
 Golden Opportunities Jewelers
 Rona Gollob
 Michael & Linda Grames
 Ben Grandy
 Leonard Greene
 Gloria Greenwald
 Peter & Bridgit Gunn
 Winifred Hamilton
 Mary Harris
 Thomas & Ann Harris
 Joan Harris
 John Haverkamp
 Richard & Jodie Heimgartner
 William Hermanson
 Susan Hermanson
 Philip Hickey
 Greg & Joan Hickey
 Sandra Hill
 Robert Hoffman
 David Hoffsis
 Edwin & Carol Holtz
 David Hubbard
 James Hughes
 Henry & Patricia Hughes
 Dennis Hunter
 James & Audrey Iorio
 Thomas Jamison
 Adam Jenkins
 Kelly Johnston
 Cheryl Johnston
 Margaret Kabelka
 Chava Kallberg
 Debbie Katz
 Francis & Maryellen Keane
 Julia Keggi
 David & Donna Kennedy
 Peter Kessen
 Robert Kinzler
 Stephen & Martha Kirsche
 Michael Klasfeld
 Brooke Kleinman
 Diane Kleska
 Karen Kosovsky
 Harry & Susan Kraiza
 Peter Krzyzek
 Bob & Kathleen Kulig
 Brenda Kuritzky
 Stephen Laccone
 Mike Ladue
 Isaac & Linda Lallouz
 Denise LaMontagne
 Stewart Lander
 Thomas Lane
 Diane Langlois
 Steve & Nancy LaPointe
 Marvin & Sara Lapuk
 Mary Elizabeth Larkin
 James & Mary Leahy
 Michael & Kimberly LeBlanc
 Richard Levy & Karen Shaffer
 Lynn Lewis
 Martin & Joyce Libbin
 Roger & Florence Liddell
 Marty & Nance Liebgott
 Penny Lightner
 Tom & Wendy Lincoln
 Bo & Lindsay Loguidice
 Diana Lombardo
 Ann Lorenzo
 Jeffrey Luddy
 Michael Lynch
 Margaret MacKinnon
 Dan & Pat Malarney
 Carol Martin
 Oscar Martinez
 Sheila Mason
 John Matchett
 David & Rollande Matthews
 Harry & Janice Mazdoorian
 The Mazumdar Family
 Bill McCann
 Frederick McCullough
 David & Courtney McDavid
 Stan & Linda McFarland
 Myles & Amy McHale
 Barry McLaughlin
 Susan Mead
 Richard Mead
 Mari Monahan
 Gene & Marcia Moriarty
 Mark & Kim Moriarty
 William Morrow
 Chris Mouta & Sarah Baldwin
 Rose Murray
 Michael & Martha Nesbitt
 Debra Norman
 Leo & Avra Novarr
 Carole Oat
 John & Darlene Oblak

David O'Connor
 Stanley & Carol Odachowski
 Jim & Debbie O'Donnell
 Patrick O'Keefe
 Thomas & Mary Louise O'Keefe
 Wendy Padula
 Lou & Chris Pandolfe
 Philip & Carol Pasternak
 Dale Patton
 Anthony & Melissa Pavick
 Barbara Phillips
 Bill Platosz
 Joe & Sandy Plourde
 Jim Pomeranz
 Stephen Potter
 Mark & Diane Powers
 Peter & Theresa Puia
 William Pursell
 Pete Putzel
 James & Tammy Ramenda
 Sedrick & Alyce Rawlins
 Michael Reddy
 Brian & Anne Reilly
 Stephen Remsbecker
 Mike Rice
 Brian & Barbara Rice
 Loretta Rice
 Jim Ristas
 John & Marilyn Rivers
 Jim & Amy Robinson
 Barbara Robinson
 Frank & Nancy Roche
 Orlando & Iris Romeo
 Rose & Elise Rose
 David Rosenberg
 Matthew Rossi
 Filomena Rotundo
 Marshall Rulnick
 Jim & Pamela Russell
 Jim Russeau
 Dave & Virginia Rutz
 Mike Ryan
 Barbara Sagan
 Ronald Salerno
 William Sales
 Donald Sanders
 Mario, Tina & Nicholas Santangelo
 Art Shaller
 Ray & Donna Schilke
 Bob Schnurr
 Art & Toby Schuman
 Ted & Ellen See
 Paul Seery
 David Seitz
 Chuck & Chris Shivery
 Sandra Singewald
 Michael Skidmore
 Jay Sloves
 Rick & Janice Smith
 Howard Sobel
 Ronald Soccoli
 Emily Soell
 Gregory & Dawn Stanhope
 Gussie Steele
 Michael & Lisa Stefano
 Steven Steinberg
 Gerald & Virginia Stewart
 James Stopa
 Maria Stoute
 Gerry & Blair Stratford
 Darrel Stickland
 Nancy Sturgis
 Rian Sullivan
 Sunshine Club of Berlin High

School
 Marina Swietek
 Sharon Swinyer
 Carol Sywenkyj
 E.M. Thomas-Jones
 Todd Thurston
 Stacey Tomkiel
 Richard & Mary Towers
 Peter & Paul Tripp
 Dean & Mary Tulumaris
 Bob Urso
 Mark Vasington
 Ron Vaughn
 Alan & Ann-Marie Veniscofsky
 Susan Wagemaker
 Michael Walczak
 Jane Walters
 Thomas Warburton
 Thomas & Leslie Watson
 David & Barbara Webb
 William Weigel
 David Weil
 Howard, Patti & Fran Weiner
 Lois Weiss
 Ruth Wile
 Pat Williams
 Charissa Williams
 Rachel Williams
 Thomas & Maureen Willsey
 Randy & Tanya Wingate
 Val & Eileen Wnuk
 John & Pandora Wohler
 Women's Golf Association of East Mountain
 Linda Woods
 Skip Wyatt
 Diane Wynne
 Bob & Kathy Yeaton
 John & Elena York
 Michael Zimmerman

“With special appreciation for the following scholarships”
 Andrew K. Dwyer Foundation Scholarship
 Daniel Novarr Scholarship
 David Epstein Scholarship
 Donald E. Vacheron Scholarship
 H. Grant Thomas Scholarship
 19 Iron Scholarship (Downey Family Foundation)
 Walking for Kids Foundation Scholarship
 William P. Lyons Scholarship

The First Tee of Connecticut would like to thank the following individuals, organizations and businesses who donated auction items for our 2016 Charity Classics:
 Betteridge Jewelers
 Beverly Buckner-Baker
 Black Hog Brewing Co.
 Paul Bocciarelli
 Burning Tree Country Club
 Carbone's Kitchen
 Caseus Fromagerie & Bistro
 Charles River

City Steam Brewery
 Bob Cleaver/iHeartMedia
 Connecticut Science Center
 David Corrado
 Country Club of Waterbury
 Chris Didden
 John Dipollina
 DISH
 Ken Doyle
 Fairview Farm Golf Course
 Fleming's Steakhouse
 Bob Gelb/CBS Radio
 Gillette Ridge Golf Club
 Golf Club of Avon
 Richard Gordon
 Gouveia Vineyards
 Greenwich Country Club
 Half Full Brewery
 Hartford Golf Club
 Hartford Stage
 Hartford Symphony Orchestra
 Hop Meadow Country Club
 Inner Essence Spa
 J Timothy's Tavern
 Joe LaCava
 Lake Waramaug Country Club
 Madison Country Club
 MasterCard
 Ted & Debbie May
 Miranda Vineyard
 Mohegan Sun
 Mohegan Sun Golf Club
 New Haven Country Club
 North Ridge Golf Club
 Old Lyme Country Club
 Palace Theater
 PGA Tour/The Barclays
 Playhouse on Park
 Pond House Café
 Robbie Pyne
 Richter Park Golf Course
 RiverQuest
 Marshall Ruben
 Elizabeth Rubino
 Shebeen Brewing Company
 Sheraton Miami Airport Hotel
 Shuttle Meadow Country Club
 Silver Spring Country Club
 Sorello's
 Spotlight Theatres/Front St Bistro
 Paul Stevens
 Taconic Golf Club
 The Bushnell
 The Corner Pug
 The Course at Yale
 The Farms Country Club
 The Hermitage Club
 The New England Patriots
 The Ranch Golf Club
 The Rooster Company
 The Stanwich Club
 Theaterworks
 Thimble Island Brewing Company
 Thomas Hooker Brewing Co.
 TPC Boston
 TPC Jasna Polana
 TPC Potomac at Avenel Farm
 TPC River Highlands
 USGA/U.S. Open
 Wampanoag Country Club
 Warner Theatre
 Wee Burn Country Club
 Woodway Country Club



The First Tee of Connecticut
55 Golf Club Road
Cromwell, CT 06416
www.thefirstteect.org

NON-PROFIT
U.S. POSTAGE
PAID
PERMIT # 100
BRISTOL, CT

